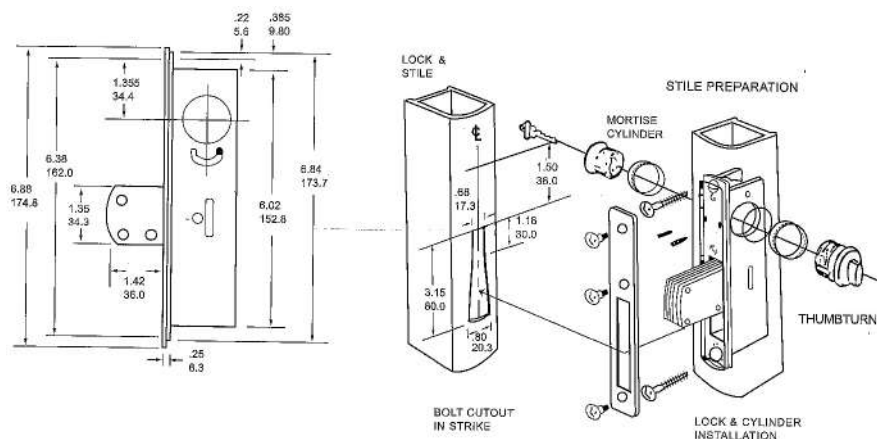


DH-1820-S

Dimensions



Features

- Bolt 1-3/8" throw, made of 5 ply laminated steel with a hardened roller pin in a case hardened center ply for maximum security.
- Lock accepts standard 1-5/32" mortise key or thumbturn cylinders with AR MS-Type cam

☀ Cylinder backset available: 31/32, 1-1/8" and 1-1/2" 7/8"

☀ Security sawing test meet ANSI performance specification.

Bolt made of 5-ply laminated steel with center 3-ply case hardened, plus hardened roll pin to resist hacksaw.

☀ Locks accept standard 1-5/32" mortise key or thumbturn cylinder.

☀ 1" x 6-7/8" faceplate available in flat, radius, radius with weather-strip and beveled (handed).

☀ Faceplate finish:

AL-Anodized satin aluminum.

DU-Anodized bronze.

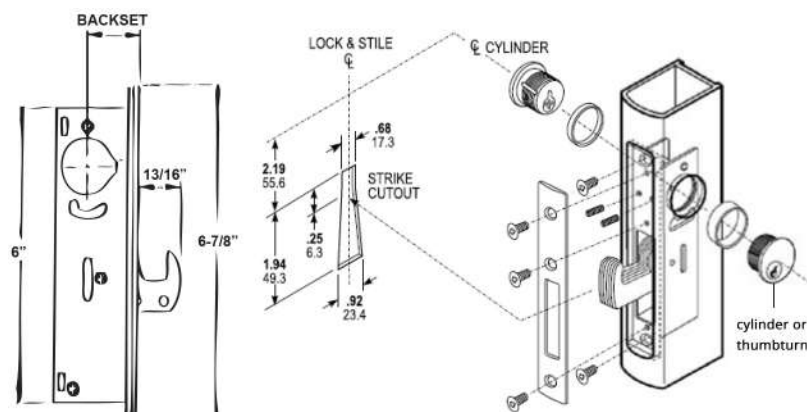
BK-Anodized black.



For Use With	Flat	Radius	Radius Weatherstripped	Left Hand Beveled	Right Hand Beveled
DH-1820-H	FP-1821	FP-1822	FP-1823	FP-1824	FP-1825
DH-1820-S					
DT-1850	FP-1851	FP-1852	FP-1853	FP-1854	FP-1855
DL-4510	FP-4511	FP-4512	FP-4513	FP-4514	FP-4515

DH-1820-H

Dimensions



Features

- Bolt 1-3/8" throw, made of 5 ply laminated steel with a hardened roller pin in a case hardened center ply for maximum security.
- Lock accepts standard 1-5/32" mortise key or thumbturn cylinders with AR MS-Type cam

☀ Cylinder backset available: 31/32, 1-1/8" and 1-1/2" 7/8"

☀ Security sawing test meet ANSI performance specification.

Bolt made of 5-ply laminated steel with center 3-ply case hardened, plus hardened roll pin to resist hacksaw.

☀ Locks accept standard 1-5/32" mortise key or thumbturn cylinder.

☀ 1" x 6-7/8" faceplate available in flat, radius, radius with weather-strip and beveled (handed).

☀ Faceplate finish:

AL-Anodized satin aluminum.

DU-Anodized bronze.

BK-Anodized black.



For Use With	Flat	Radius	Radius Weatherstripped	Left Hand Beveled	Right Hand Beveled
DH-1820-H	FP-1821	FP-1822	FP-1823	FP-1824	FP-1825
DH-1820-S					
DT-1850	FP-1851	FP-1852	FP-1853	FP-1854	FP-1855
DL-4510	FP-4511	FP-4512	FP-4513	FP-4514	FP-4515